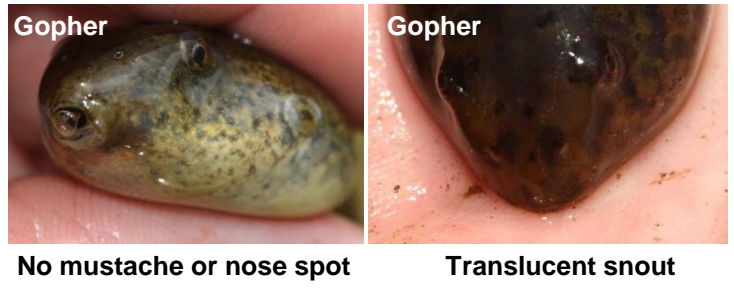
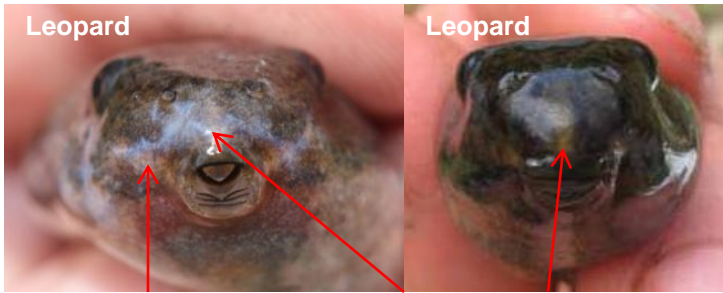
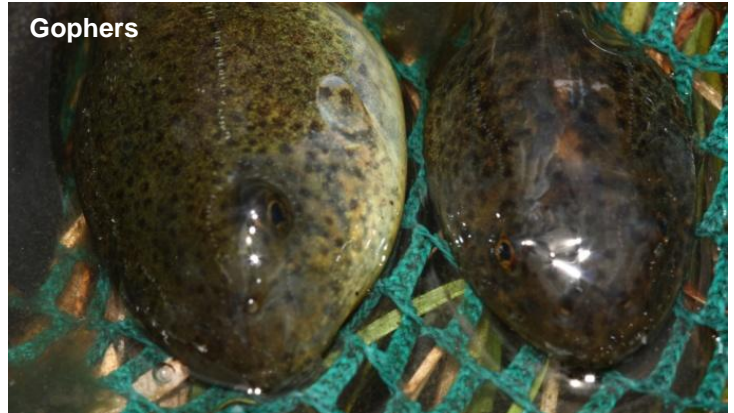


Differentiating Between Gopher & Leopard Frog Tadpoles



Light diagonal mustache Light nose spot/vertical stripe

Body tends to be dark brown, but coloration is variable (can be golden in clear water); faint mustache & nose spot/vertical stripe may only be a lighter brown than the body; skin opaque & marked with dark, fuzzy spots; tail fin can have many or few spots or be all black; body tends to be more slender & belly less plump than a gopher frog's



Body tends to be honey colored with translucent skin (like looking into amber), especially on the snout; large tadpoles become more opaque looking, but small tadpoles have a clear snout & widely spaced black spots on body; tail fin tends to be higher & more arched than a leopard frog's with large, diffuse spots or even no spots (never all black); body tends to be more globular than a leopard frog's, particularly near junction with tail

